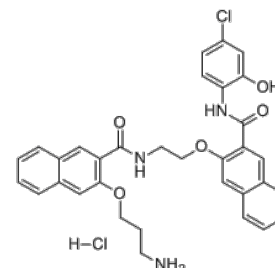


**Product Name** : CREB inhibitor 666-15  
**Cat. No.** : PC-38619  
**CAS No.** : 1433286-70-4  
**Molecular Formula** : C<sub>33</sub>H<sub>31</sub>Cl<sub>2</sub>N<sub>3</sub>O<sub>5</sub>  
**Molecular Weight** : 620.52  
**Target** : CREB/CBP  
**Solubility** : 10 mM in DMSO



## Biological Activity

CREB inhibitor 666-15 is a potent and selective inhibitor of **CREB**-mediated gene transcription with IC<sub>50</sub> of 81 nM, potently inhibits cancer cell growth without harming normal cells.

CREB inhibitor 666-15 is highly selective, shows very weak activity against NF-κB-mediated gene transcription with IC<sub>50</sub> of >5 μM.

CREB inhibitor 666-15 decreases endogenous CREB target gene expression, shows significant inhibition of transcription of Nurr1/NR4A2 in HEK 293T cells at 50 nM.

CREB inhibitor 666-15 potently inhibits growth of MDA-MB-231 and MDA-MB-468 cells with GI<sub>50</sub> in the midnanomolar concentration range (<100 nM).

CREB inhibitor 666-15 (10 mg/kg, i.p.) suppresses MDA-MB-468 tumor growth in vivo.

## References

Fuchun Xie, et al. *J Med Chem*. 2015 Jun 25;58(12):5075-87.

**Caution: Product has not been fully validated for medical applications. Lab Use Only!**

E-mail: tech@probechem.com